

## BUILDING SPECIFICATIONS







## KITCHEN

The fully fitted kitchen is equipped with a **Siemens** oven, induction hob and extractor hood.

The doors of the base units have a light-coloured matt lacquer finish while the worktop and kitchen front are by **Silestone**. The taps of the single-basin stainless steel sink are by **TRES**.



## BATHROOMS

The main bathroom will feature a wall-hung wooden unit with two drawers and an oak finish, a worktop and double basin with recessed taps by **TRES**, as well as a double backlit mirror. The white wall-hung toilet will be by **Ideal Standard** (the Tesi model) with a **TECE** push button.

We have chosen to include recessed **TRES** taps in the showers. The showers come with a walk-in shower tray and a glass screen. The wall tiling in the shower will be the Eukalypt Vector Crema Miel 40x120cm model from the house of **Saloni**, while the other walls of the bathroom will be painted.

Located on the first floor, the secondary bathroom will have the same characteristics with the exception of the washbasin, which will have a single basin with a tap and mirror.

On the ground floor, the guest toilet will be handed over with a wooden vanity top without a cabinet, a countertop washbasin with a mirror and taps by **TRES**.





## INTERIOR CARPENTRY

The main entrance door to the house is armoured. The interior doors shall be made of natural oak veneer wood.

The built-in wardrobes will have the same characteristics and will feature doors up to the ceiling, a luggage rack, clothes rail and melamine interior finish.





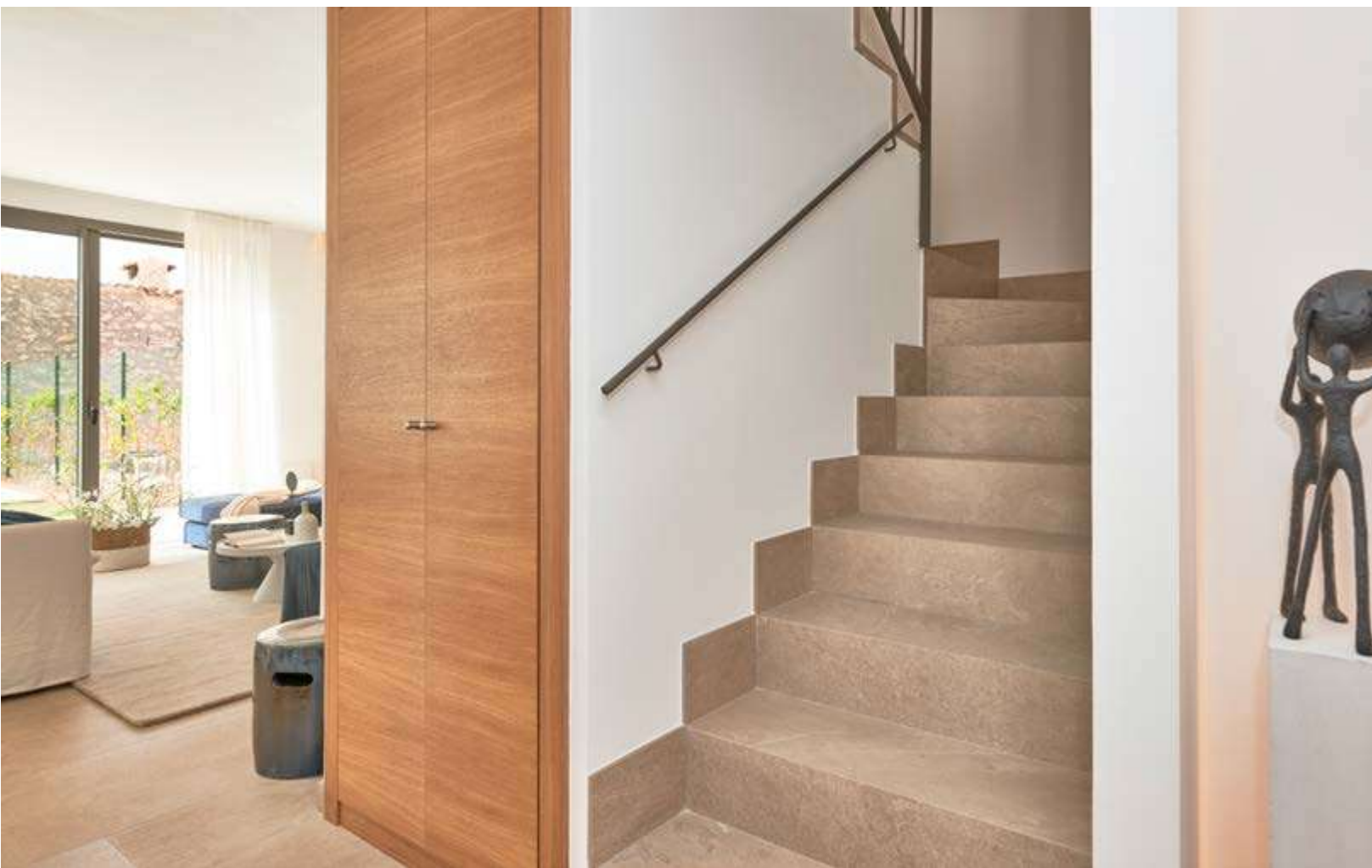
## EXTERIOR CARPENTRY

The property has aluminium windows and glazing with a thermal break finished in anthracite.

To ensure our clients enjoy maximum comfort, the aluminium roller blinds in the living room are motorised. The bedrooms are fitted with Majorcan shutters.







## FLOORING

Large-format, 120x60cm Ardesia Avorio porcelain tiles by **Saloni** have been chosen for all the interior ground-floor rooms of the house and for the staircase leading to the first floor, while the same tiles have been used on the terrace, in this case with an anti-slip finish.

We have chosen 20x120cm Eukalypt Miel tiles, also by **Saloni** for all the first-floor rooms including the bathrooms.

## FIXTURES

Each property has an arothermal system with an accumulation capacity of 200 litres for the production of domestic hot water. In addition, **underfloor heating** from another independent arothermal plant guarantees maximum comfort.

Your home also has comfortable air-conditioning provided by a split system concealed in false ceilings and distributed via grilles.

The **Schneider Electric** units are in white. Telephone and TV-TDT-SAT sockets have been installed in the living room and in all the bedrooms, and there is also a terrestrial TV aerial and pre-installation for a satellite dish.





## EXTERIORS

Each house is handed over with an illuminated private swimming pool.

The gardens have been prepared with topsoil, basic landscaping, an irrigation network and garden hedges to separate the properties.





TAYLOR WIMPEY DE ESPAÑA S.A.U. reserves the right to modify or change the materials, models and distribution of these specifications and plans with the purpose of improving the project in compliance with the criteria of the project technicians.

Images and project drawings are for illustrative purposes only. Its content does not constitute a contract, part of a contract, or a guarantee.

