

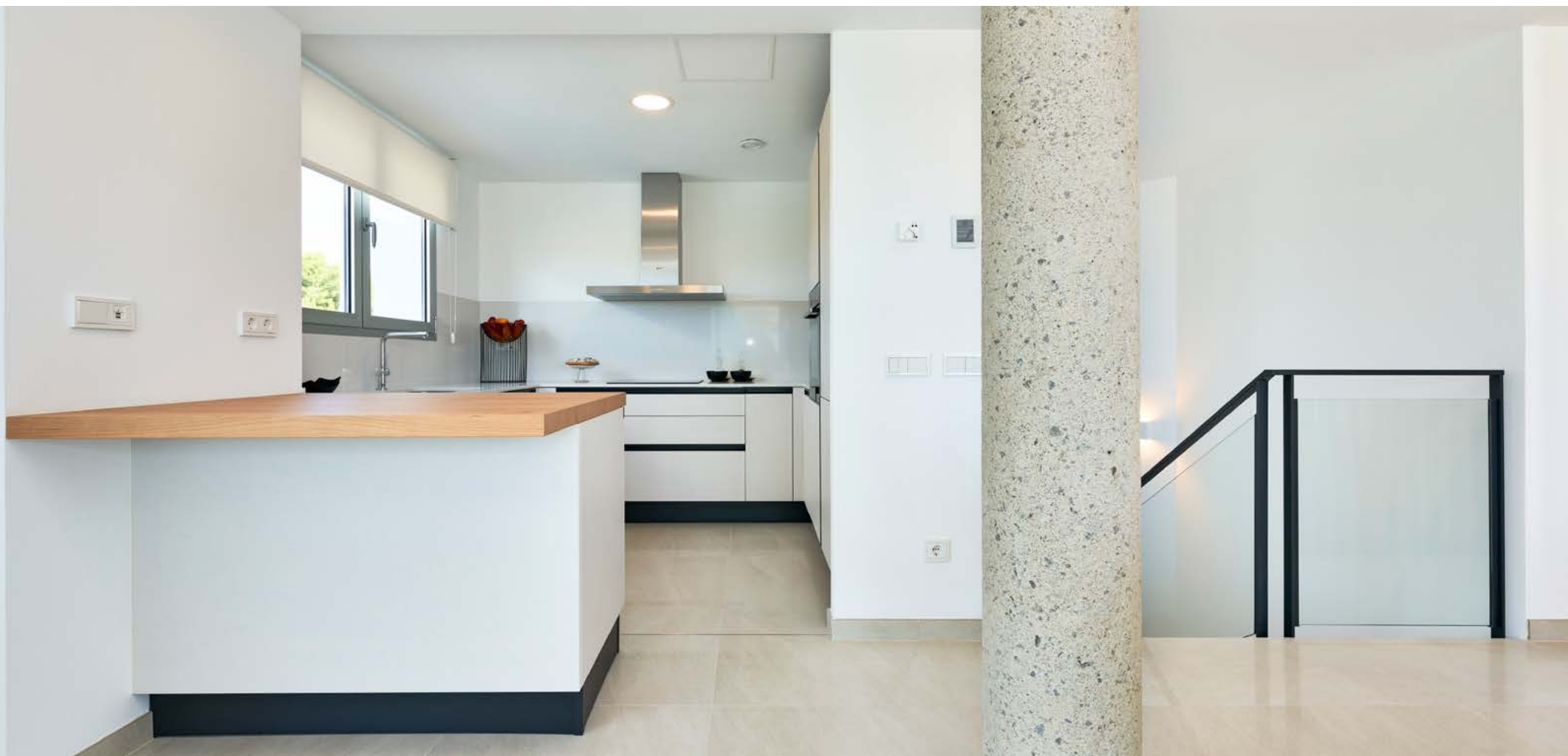
BUILDING SPECIFICATIONS



KITCHEN

Kitchen cupboards from the Italian manufacturer, **Veneta Cucine**, with doors in Graffiato Chiaro colour and handles in Brunitta, with worktop and splashback by **Silestone**. Equipped with oven, induction hob and extractor fan by the **NEFF** brand.

Stainless steel single sink with taps by **Hansgrohe**.



BATHROOMS

Bathrooms will have a designer unit by **Kyrya**, in oak finish with a washbasin on an anthracite counter, taps by **Hansgrohe** and mirror.

Floor-mounted WC from the Kartell collection by **Laufen**.

Large format 75x75cm ceramic flooring by **Saloni**, model Petralava Ivory, finished in Lappato.

Tiling also by Saloni, Petralava Ivory with 60x120cm format.

In order to maximise comfort as well as the aesthetic appearance of the bathrooms, we have chosen to use **recessed taps** in the showers, by **Hansgrohe**, and floor-level shower tray with glass shower screen.



INTERIOR CARPENTRY

The entrance door to the dwelling is wood with a high degree of sound-proofing and an airtight fit.

High quality interior doors in smooth white polymer. Fitted wardrobes in white with luggage shelf, hanging rail and beige textile finish melamine lining.





EXTERIOR CARPENTRY

Windows and patio doors by TECHNAL with thermal break and matte silver anodised finish from the SOLEAL range to the bedrooms, living room, kitchen and stairwell. Tilt windows to bathrooms and tilt and turn to cloakrooms. The new top quality TIGAL series will be installed in the living room.

Double glazing with reinforced sound insulation and heat control to maximise warmth and comfort throughout the property.

To the bedrooms on the main façade, roller blinds by the prestigious manufacturer **Renson** will be installed, with home automation control by **KNX** system.

Sliding shutters with matte silver anodised aluminium slats to the bedrooms on both the side and rear façades.

Safety glass railings to the terraces and solarium of the dwelling.



FLOORING

The same ceramic tiles have been used in all the interior spaces throughout the home, from the **Saloni** brand, model Petralava Ivory, with Lappato finishing in 75x75cm large format, and skirting from the same brand and model.



INSTALLATIONS

Panasonic air source heat pump for air conditioning and heating with fan coils and underfloor heating, controlled by **KNX** home automation system.

Domestic water heating with heat pump.

Berker light switches, series K1 in white.

Telephone and TV-TDT-SAT points in living room and bedrooms.

Terrestrial TV antenna and dual-polarity satellite dish.

Mechanical double-flow ventilation system with enthalpy heat exchanger.



TAYLOR WIMPEY DE ESPAÑA S.A.U. reserves the right to modify or change the materials, models and distribution of these specifications and plans with the purpose of improving the project in compliance with the criteria of the project technicians.



EXTERIORS

In order to maximise levels of thermal and acoustic comfort, this development is equipped with an advanced and prestigious external thermal insulation system, manufactured by STO.

Exterior communal areas have a pool with shower and lighting, as well as landscaped garden areas with irrigation system.

Private gardens are separated by garden hedges.

Each home includes 2 parking spaces in the basement and a storeroom, with pre-installation of a charging point for electric vehicles.

