

BUILDING SPECIFICATIONS





KITCHEN

With the aim of endowing the rooms with a sense of spaciousness, the kitchen opens onto the living/dining room and the terrace. Not only does this create an open and unobstructed space, but it also allows the entire room to be bathed in natural light.

The kitchen features white laminate wall and base units and a stainless steel single-basin sink. The 2cm **Silestone** countertop is also in white.

It is also equipped with everything you need: induction hob, oven and stainless steel extractor hood.

BATHROOMS

In order to provide our customers with the utmost comfort, the shower tray is integrated into the floor and protected by a glass screen. In the main bathroom there is a suspended oak unit with countertop and integrated washbasin. There is a pale coloured laminated unit in the second bathroom with an integrated washbasin. All taps are chrome, model *Class* by **Tres**, with washbasins having a mixer tap and showers having a recessed version with raindance shower head. White WCs by **Ideal Standard** are floor-mounted with tank.

We have chosen floor-to-ceiling ceramic tiling for the bathrooms, model *Petralava* in ivory, 60,5 x 30,5cm, by **Saloni**.





INTERIOR CARPENTRY

To increase the sensation of brightness, the interior doors have been lacquered in white.

Seeking aesthetic continuity, the fitted wardrobes have the same finish as the interior doors. They contain a luggage rack and clothes rail, and the interiors are finished in melamine.

All the hanging hardware is made of stainless steel or matt silver aluminium. The handles, locks and knobs are made of the same material.





EXTERIOR CARPENTRY

All the windows and terrace doors in the apartments are made of white aluminium.

On the other hand, to guarantee comfort, the windows have a thermal break and insulating double glazing.

The bedrooms feature lacquered aluminium blinds.

In addition, the apartments have security glass in the living room terrace doors.



FLOORING

For the interior flooring we have chosen a ceramic tile by **Saloni**, model Pelatrava in ivory, measuring 60,5 x 60,5cm.

The terraces have the same model of tile but in its non-slip version.



FIXTURES

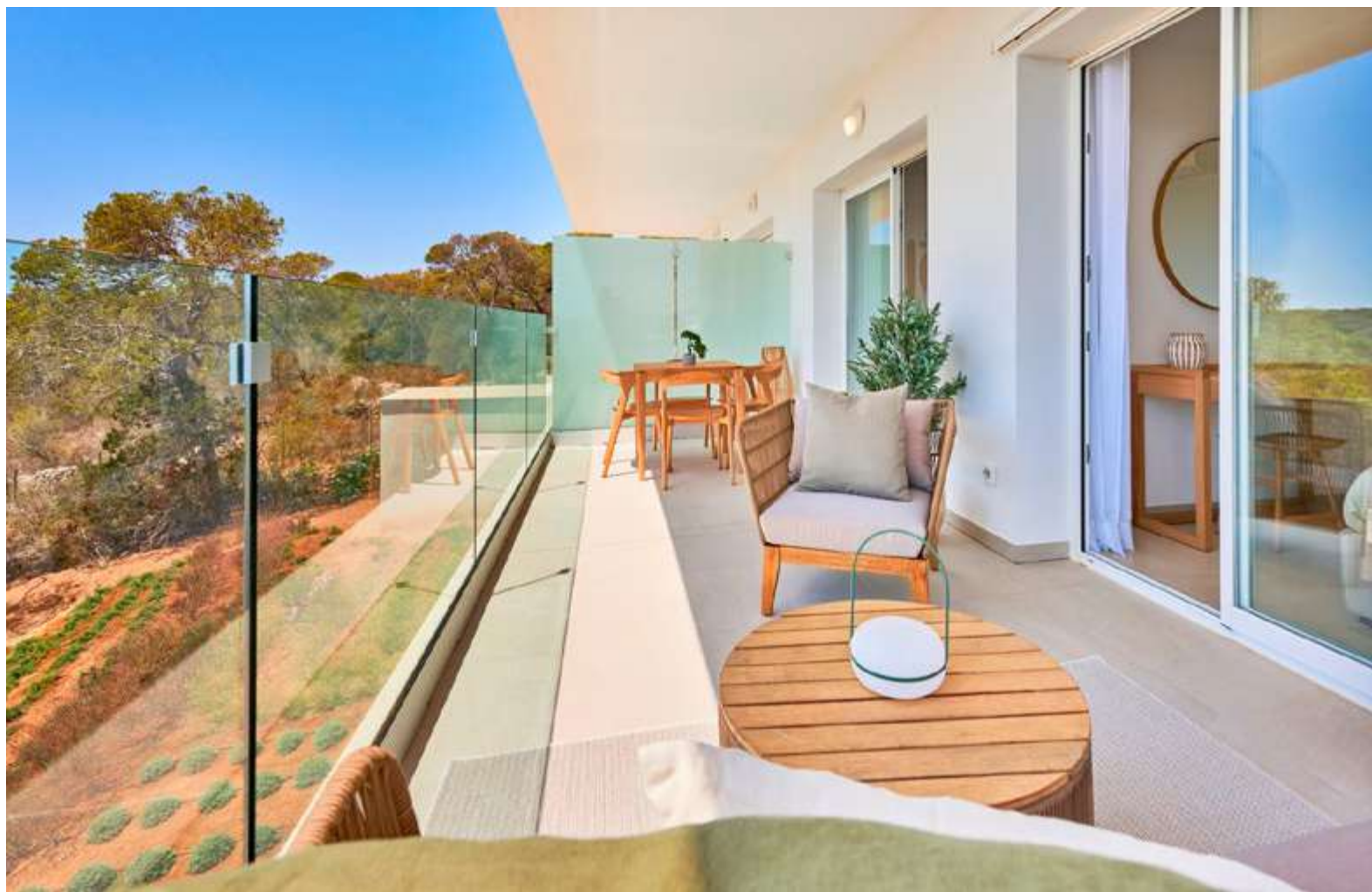
These homes are comfortably air-conditioned by means of an air to air heat pump with a wall-mounted split system.

In addition, a highly energy efficient compressor with Inverter technology has been installed.

Each property has an aerothermal system with an accumulation capacity of 110L for the production of domestic hot water.

The entire property is illuminated by recessed LED ceiling lights. The laundry room has a wall light.

The living room and bedrooms have telephone and TV-TDT-SAT sockets. The house also has a terrestrial TV antenna and a satellite dish with eight polarities.





EXTERIORS

One of the major attractions of this residential development is its large communal gardens. These include 2 fantastic communal swimming pools, each of which have a shower and lighting.

Finally, each property comes with a ground-level parking space and a basement storage room.

All parking spaces are equipped with conduit for the pre-installation of an electric outlet, facilitating the future installation of a car charging point.

TAYLOR WIMPEY DE ESPAÑA, S.A.U. reserves the right to modify or change the materials and distribution of the abovementioned specifications and plans to improve the project following the criteria of the project architects.

*The images and project plans are purely for illustrative purposes. Its content does not form a contract, part of a contract or guarantee.

