

BUILDING SPECIFICATIONS





KITCHEN

The kitchen integrates perfectly into the design of the home. There are lower cupboard units in white with a satin finish, and two columns, one of which houses a refrigerator and the other has storage space, an oven, and space for a microwave (not included). The worktop and oven front panel are made from compact quartz.

It is equipped with an oven, induction hob, integrated refrigerator and dishwasher by **Siemens**. The extractor hood is integrated into the ceiling and is manufactured by **Pando**. The single sink is in stainless steel with taps by **Tres**.

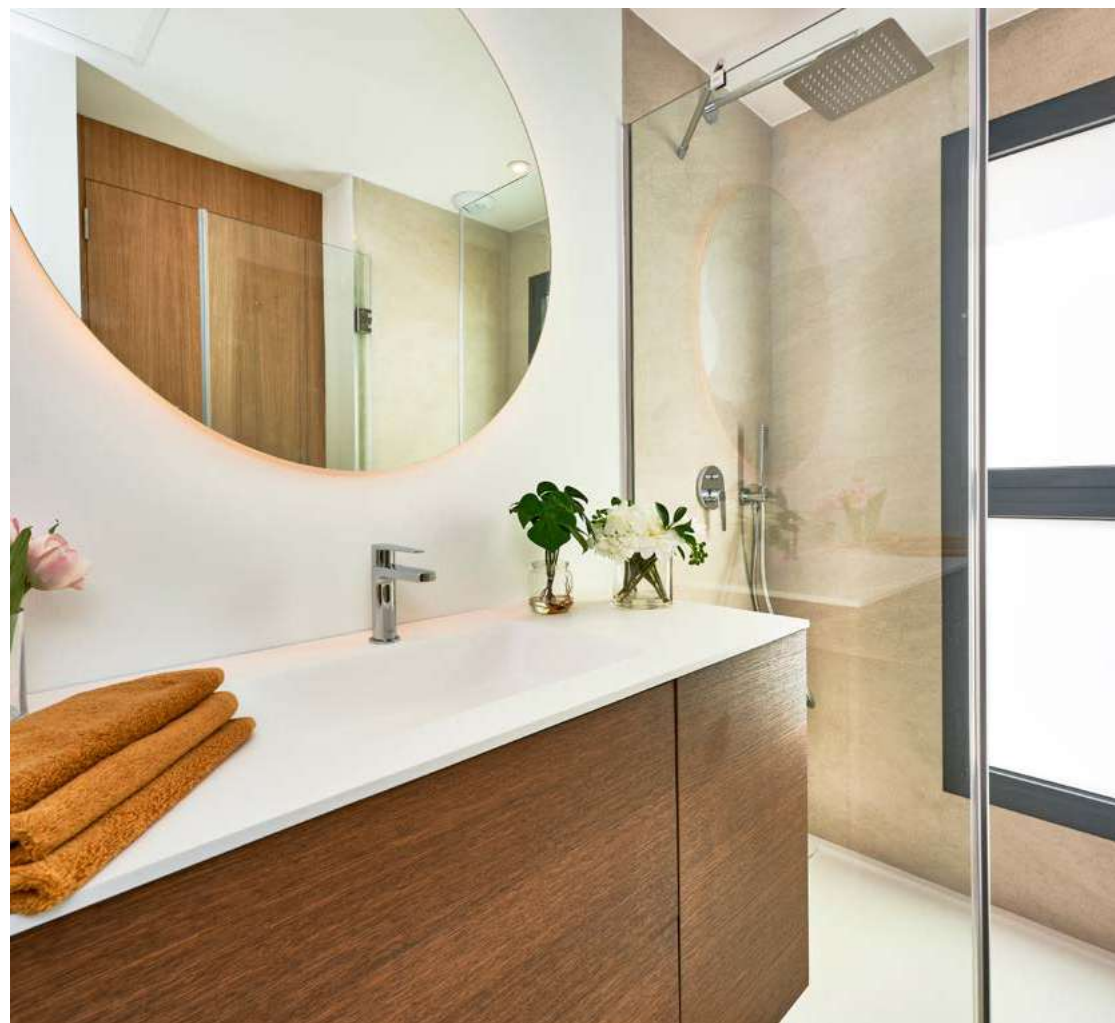


BATHROOMS

The two bathrooms, both en-suite, have an exclusive suspended unit by **Kyrya**, with an oak finish, and an inset washbasin in Solid Surface. The cloakroom has a floor-standing unit by **Visobath** Scala 02 with a Hasviq 100 integrated washbasin.

Taps in all three bathrooms are chrome, model Class by **Tres**, counter-mounted on washbasins and recessed in showers. Mirrors are included. The showers have fixed glass screens and flush shower trays. Sanitary fittings are by **Ideal Standard**, in white, model Tesi or similar, suspended and inset.

Wall tiling inside the showers will be model *Petralava* in Ivory, format 120x60cm, by **Saloni**. The other walls, as throughout the home, will have acrylic paint in white.





INTERIOR CARPENTRY

Each property has an armoured front door while the interior doors are made of light oak wood. They have magnetised handles and wooden panels up to the ceiling, providing a greater feeling of spaciousness throughout the home. The built-in wardrobes are also made of light oak-coloured wood with line coloured interiors and feature hinged doors, a luggage rack and a clothes rail.

All hanging hardware is made of stainless steel or matt silver aluminium. To ensure that particular attention is paid to detail throughout the design, the handles, locks and knobs are made of the same material.



EXTERIOR CARPENTRY

All the window and glazing carpentry is made of anthracite-coloured aluminium. They feature a thermal break to guarantee your comfort. More specifically, **Cortizo's** Cor 60 model has been chosen for the windows and the same brand's Corvisión model for the picture windows.

The villa also has motorised roller blinds in the living room and bedrooms. The laundry room and the utility room are fitted with Majorcan shutters. Depending on the type of home, the utility room and machine room will have Mallorcan-style shutters.



FLOORING AND PANELLING

For all the interior spaces, we have chosen the same large format (75 x 75cm) porcelain ceramic tiling: **Saloni** brand, model *Petralava* in Ivory colour and with a matte finish. Skirting tiles are the same colour and model. A similar model will be used for terraces and porches in a 60x60cm non-slip version.

With all these designer details, **Taylor Wimpey España** has sought to create a home with character and a cosy, natural atmosphere. That is why one of the walls of the living room extends from the outside with a stone lining that creates a spectacular sense of continuity between the terrace and the interior space.



FIXTURES

Air conditioning is provided by an inverter heat pump system, with ducted fan coil units in the living room and in each of the bedrooms.

On the other hand, domestic hot water is produced by **aerothermal** energy. Pre-installation for the connection of solar panels on the roof.

All the mechanisms in the property are controlled by **Berker** K1 series switches and sockets, in white. The living room and bedrooms are equipped with telephone and TV-TDT-SAT sockets.





EXTERIORS

Las Villas de Dalt de Sa Rapita stand out for their exclusive design.

All homes have a private pool with mosaic tiling and finished with the same porcelain tiling as the rest of the home, **Saloni** model *Petalava* in Ivory.

Gardens are delivered with topsoil, hedging, and a lawned area of varying surface types, depending on the home and corresponding irrigation connection.

TAYLOR WIMPEY DE ESPAÑA S.A.U. reserves the right to modify or change the materials, models and distribution of these specifications and plans with the purpose of improving the project in compliance with the criteria of the project technicians.

*The images and project plans are purely for illustrative purposes. Its content does not constitute a contract, part of a contract or guarantee.

