

BUILDING SPECIFICATIONS

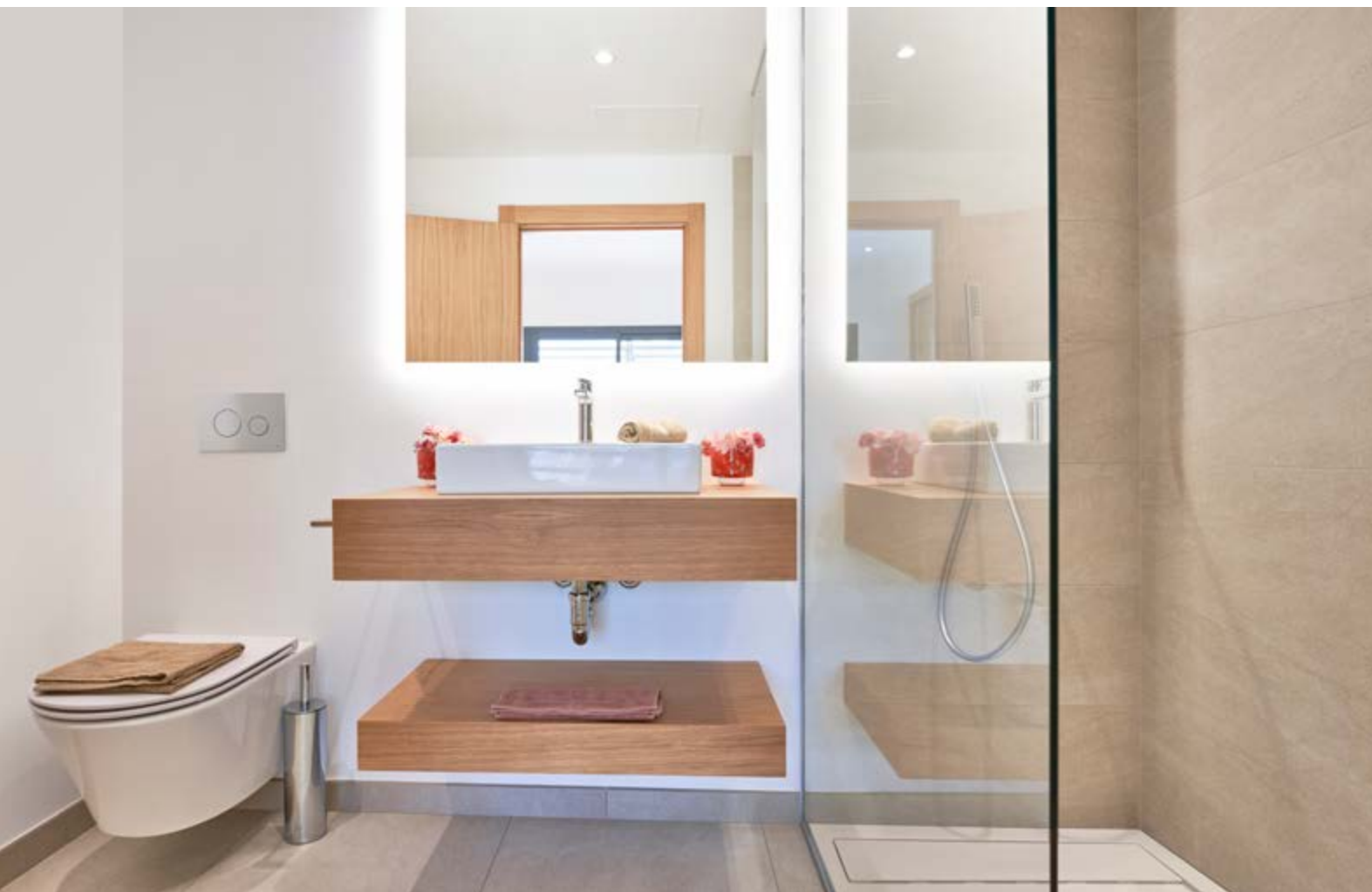


KITCHENS

The kitchens at **Ses Salines** are perfectly integrated into the design of the homes. Equipped with lower units with matte magnolia-coloured melamine, and worktops and front fascia by **Silestone** in a pale colour.

All kitchens have an appliance package by **Bosch** which includes an oven, induction hob, and extractor fan. There is a single sink with a vertical mixer tap by the **Tres** brand.





BATHROOMS

The main bathroom has a double suspended oak-colour wooden shelf with a ceramic washbasin on the countertop. The second bathroom contains a unit by **Visobath** with a countertop and an integrated washbasin.

With the aim of maximising comfort as well as the aesthetic appearance of the bathrooms, we opted to install recessed taps in the showers, model *Class* by **Tres**. Taps on the washbasins in both bathrooms are by **Tres**, model *Class* mixer tap. The shower tray is flush, with a glass shower screen.

Suspended WC model *Rodin+* by **Jacob Delafon** in main bathroom and floor-mounted WC with recessed cistern in second bathroom.

INTERIOR CARPENTRY

The dwelling has an armoured security main entrance door with an interior oak panel to combine with the rest of the woodwork in the dwelling.

Interior doors are veneered in natural oak colour and varnished in the same colour with magnetic closures. The fitted wardrobes are also in natural oak colour with doors to ceiling level, melamine lining to the interior, and include a luggage shelf and hanging rail.





EXTERIOR CARPENTRY

Windows and glazing with thermal break and finished in anthracite grey lacquer, RAL7016.

The aluminium shutters in the bedrooms are lacquered in spruce green, RAL6009.

Terrace and porch railings are stainless steel, AISI 304, in black.

Insulating double glazing throughout the dwelling, with safety glass to living room patio doors.





FLOORING

We have chosen the same ceramic tiling for every room in the apartments, by **Saloni**, model *Petralava*, 60x60 cm, with a matte finish and the skirting to match.

The terraces will have the same model tile in a non-slip version. The tiling in the wet zones of the bathrooms is the same model, in 30x60cm format, creating a sense of harmony and continuity.

FACILITIES

Every home has an air conditioning system with air source heat pump and inverter technology via fan coils integrated into the false ceilings, distributed via grilles and with individual climate control in each room.

A lighting package is included with energy-efficient LED spotlights throughout the home.

Aerothermal system for domestic hot water production.

Including Telephone and TV-TDT-SAT sockets in the living room and bedrooms. Terrestrial TV antenna and TWO polarity parabolic antenna.





EXTERIORS

Communal areas have a swimming pool with shower and lighting, as well as landscaped garden areas with irrigation system installed. Lighting system with motion sensors and a timer for exterior areas and pool.

The private gardens of the ground-floor homes are separated from each other by hedging.

Every home has its own allocated parking space, with preinstallation for an electric vehicle charging point, and an individual storage room in the basement.



TAYLOR WIMPEY DE ESPAÑA S.A.U. reserves the right to modify or change the materials, models and distribution of these specifications and plans with the purpose of improving the project in compliance with the criteria of the project technicians.

*The images and project plans are purely for illustrative purposes. Its content does not constitute a contract, part of a contract or guarantee.

